



[www.ssgseattle.org](http://www.ssgseattle.org)



# ANNUAL REPORT

## 2023

### OUR MISSION

Welcome and assist all those who desire spiritual development of themselves and their families through the dissemination, teaching, and Practice of the Spiritist Doctrine.

# OUR IMPACT

The SSGS Department of Spiritual Studies has significantly advanced spiritual education and growth by creating accessible and supportive environments for Spiritist studies. Here are the key impacts and achievements in 2023:

## **Inclusive and Accessible Learning:**

- **In-Person and Virtual Meetings:** Our study groups have met both in person and online, accommodating diverse preferences and needs, and enabling broader participation.
- **Weekly Sessions:** Held once a week for 60 to 90 minutes, these regular sessions provide consistency and structure for participants.

## **Welcoming Environment:**

- **Open Participation:** Facilitators welcome participants at any time without registration, lowering barriers and encouraging engagement with Spiritist teachings.
- **Supportive Atmosphere:** Emphasizing friendship, emotional, and spiritual support, we create a nurturing environment where participants feel valued and connected.

## **Dedicated Facilitation:**

- **Prepared Facilitators:** Meetings are managed by facilitators who thoroughly prepare by studying the chosen themes and books, ensuring a deep understanding of Spiritist content.
- **Interactive Sessions:** Facilitators encourage discussions and reflections, enhancing comprehension and retention of the material.

## **Educational and Spiritual Growth:**

- **Comprehensive Understanding:** Our commitment to studying Spiritist themes has deepened participants' knowledge of the relationship between the physical and spiritual worlds.
- **Emotional and Spiritual Support:** By fostering a supportive environment, our study groups provide crucial emotional and spiritual support, helping participants navigate personal challenges and growth.





# BUILDING FUTURES, TOGETHER

In 2023, our social programs significantly impacted the lives of our community members. Here are the key outcomes:

- **Increased Community Engagement:** Our inclusive approach and flexible meeting options have led to more regular participation and enhanced community engagement.
- **Enhanced Knowledge:** Participants have gained a comprehensive understanding of Spiritist concepts, contributing to their spiritual growth and development.
- **Supportive Network:** The sense of community and support within our study groups has fostered a positive and nurturing environment, helping participants feel more connected.
- **Community Support:** Our charity programs have provided crucial support to children, families, adults, and seniors, addressing their immediate needs and improving their quality of life.
- **Volunteer Engagement:** Our open volunteer program encouraged broad participation, fostering a strong sense of community and collective responsibility.
- **Spiritual and Emotional Comfort:** The Fraternal Service provided spiritual solace through prayers, offering emotional and spiritual support to many individuals and families.
- **Winter Clothing Drive:** Our successful clothing drive distributed a significant amount of winter clothing and blankets to those in need, demonstrating our community's care and compassion.

Through these initiatives, the Spiritist Study Group of Seattle has reinforced its commitment to aiding those in need and fostering a supportive, compassionate, and resilient community.



# SOCIAL PROJECTS



## Issaquah Meals

The Issaquah Meals Project has been a cornerstone of community support for over three decades, providing meals to the homeless, families, and senior citizens in the area. Every third Saturday of the month, we prepared and served meals, ensuring regular and reliable support for those in need. This consistency has been crucial in providing stability and nourishment to our community members.

In 2023, we provided a total of 569 meals. These meals have been a vital source of nutrition for the homeless, families, and senior citizens who rely on our program.

The meals not only addressed hunger but also brought together volunteers and guests, strengthening community bonds and fostering a spirit of solidarity and care.

## Open Arms Project

In June 2023, we launched a new social assistance initiative: the Open Arms Project. The mission of Open Arms is to assist and support foster families by providing essential donations of diapers and wet wipes. Over the past year, the Open Arms Project has been instrumental in providing much-needed assistance to foster families. By donating essential items such as diapers and wet wipes, we have alleviated some of the financial and logistical burdens these families face.

Each month, we update our list to reflect the diaper sizes most needed by the foster care system. This targeted approach ensures that our donations meet the specific needs of the families we support, making our assistance more effective and impactful.

In 2023, we donated a total of 1,809 diapers to foster families. These donations have been crucial in ensuring that foster parents can provide adequate care for the infants and young children in their care. Alongside diapers, we donated 2,388 wipes throughout the year. These contributions have helped maintain hygiene and comfort for the children, contributing to their overall well-being.

We will remain committed to continuing this vital work and expanding our support in the coming years.



## THANK YOU

HELEN'S PLACE

We would humbly like to extend our thanks to you for your willingness to provide us with financial support.

Your donation is greatly appreciated.

Thank you for your support.



www.ssgseattle.org



### Prayer Request

This service is intended to collect names of incarnated and disincarnated beings for us to pray in their favor in our irradiation meetings. The fluidic radiations are directed for therapeutic purposes by the working teams of the physical and spiritual planes.

**PRAYER FOR INCARNATE BEINGS**

- Name for whom the prayer is addressed
- City & State - If the person is hospitalized, please indicate the name of the hospital
- If you wish, please leave a message about your request

**PRAYER FOR DISINCARNATED BEINGS**

- If disincarnated, only the full name to whom the prayer is addressed

"Prayer is an act of worship. To pray to God is to think of Him; it is to draw near to him; it is to put oneself in communication with him. We can propose three things through prayer: praise, ask, give thanks."  
(Spirits' Book, Allan Kardec, question 659)

## Fraternal Service

### Prayers Requested:

This service collects names of incarnated and disincarnated beings for whom we offer prayers during our irradiation meetings. Through this initiative, we provide spiritual support and comfort to individuals and families, promoting a sense of peace and connectedness within our community.

### Clothing Drive Campaign:

To help keep our community warm during winter, we organized a clothing drive campaign from November 4th to January 15th. We collected new or gently used adult coats, hats, gloves, boots, scarves, and blankets. This campaign successfully provided essential winter clothing and blankets to those in need, ensuring that vulnerable individuals stayed warm during the cold months.

## Helen's Place

Helen's Place provides a safe and stable space for women experiencing homelessness to rest and heal. Open 24/7/365, the shelter offers women the care and comfort they need while supporting their journey to stability and housing.

In 2023, we served a total of 480 meals to women at Helen's Place. By providing monthly dinners, we have helped ensure that women at Helen's Place have access to nutritious and comforting meals, which is essential for their health and well-being. Our involvement has fostered a sense of community and support, showing the residents that they are cared for and valued. The consistent provision of meals helps create a stable environment, allowing the women to focus on their journey toward stability and housing without worrying about their next meal.

Through these programs, the Spiritist Study Group of Seattle has reinforced its commitment to aiding those in need and fostering a supportive, compassionate, and resilient community.

### Keep Our Community Warm This Winter

Join us in spreading warmth and kindness this winter season

Help us provide winter clothing and blankets for those in need.

New or gently used adult coats, hats, gloves, boots, scarves, and blankets are accepted.

Accepting donations from November 4th to January 15th.

You can bring your donation to any drop-off locations listed below or email [ssgseattle@gmail.com](mailto:ssgseattle@gmail.com) to schedule a pick-up.

**Bothell** 307 202nd Place SE Bothell, WA 98012

**Bellevue** 6574 150TH PI SE, Bellevue, WA 9800

# FINANCIAL DATA REPORT

Fiscal Year: 2023

<b>Beginning Balance (Cash)</b>	\$4,593.97
<b>Monthly Donations</b>	
<b>Amount</b>	
TOTAL	\$3,120.00
<b>Random Donations</b>	
<b>Amount</b>	
TOTAL	\$3,112.64
<b>FUNDRAISER EVENTS</b>	
<b>Amount</b>	
TOTAL	\$881.00
<b>Retail Sales</b>	
<b>Amount</b>	
TOTAL	\$0.00
<b>Expenses</b>	
<b>Amount</b>	
TOTAL	\$2,555.33
<b>Ending Balance</b>	\$9,152.28





# MARKETING DEVELOPMENT

In summary, the marketing efforts of the Spiritist Study Group of Seattle in 2023 have successfully publicized our activities and disseminated Spiritist knowledge, leading to increased visibility, community interaction, and educational outreach.

- **Increased Visibility:** Our marketing efforts have significantly increased the visibility of SSGS and its activities, attracting more community members and participants.
- **Enhanced Community Interaction:** By leveraging social media and other communication channels, we have fostered better interaction and dialogue with the community, creating a more engaged and informed audience.
- **Educational Outreach:** Our dissemination of Spiritist knowledge has had a profound impact, providing moral and spiritual guidance to many. The use of multiple platforms has ensured that this knowledge is accessible to a broad audience.

## Key Marketing Channels and Achievements

### Social Media:

- **Platforms:** We actively use Facebook, Instagram, and WhatsApp to share information and updates.
- **Engagement:** Our social media posts have seen increased engagement, with more likes, shares, and comments, indicating a growing interest in our activities.
- **Management:** WhatsApp groups are efficiently managed by department heads, ensuring relevant and timely communication.

### YouTube:

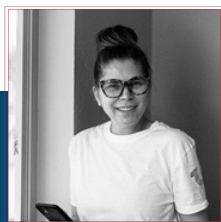
- **Content Sharing:** We use the YouTube platform to share classes and podcasts facilitated by members of our group or guest speakers.
- **Quality Control:** Videos are reviewed, edited, and properly identified before posting, ensuring high-quality content delivery.
- **Reach:** Our YouTube channel has grown in subscribers and views, extending our teachings and discussions to a wider audience.



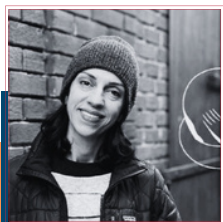
# BOARD OF DIRECTORS



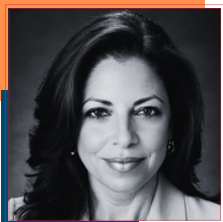
**Flavia Carolyne Valadao Souza**  
President



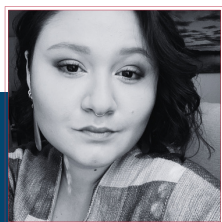
**Lara Watney Pires**  
Vice-President



**Elaine Cristina Belentani-Saito**  
Treasurer



**Mirelle Wuolle**  
Secretary



**Tais Motta**  
Marketing & Communication



**Mateus Oliveira**  
Counselor





# MESSAGE

## FROM OUR PRESIDENT



In the year 2023, the Spiritist Study Group of Seattle (SSGS) experienced significant growth in its activities, a testament to the proactive efforts of the board in seizing new opportunities. The center remains steadfast in its dedication to the study and practice of the Gospel of Jesus, with renewed study groups tailored to better meet the needs of the community.

The SSGS Marketing Department has demonstrated creativity and innovation in expanding the reach of its activities through strategic social media initiatives.

Our Social Assistance projects, which aim to provide essential sustenance and support to those in need, have continued to thrive thanks to the unwavering dedication of our volunteers.

In order to ensure the center's financial stability, new measures have been implemented without compromising the quality of our services.

The transition of our online Gospel According to Spiritism and Kid's Studies sessions from virtual to in-person gatherings on Sundays reflects our commitment to accessibility and safety for all participants.

Our core mission of enlightening and comforting the hearts of those seeking solace at SSGS remains paramount, and we are dedicated to maintaining a welcoming and secure environment for all who engage with our activities.

## Flavia Carlyne

*SSGS President*

# THANK YOU



Website

[www.ssgseattle.org](http://www.ssgseattle.org)



Email

[ssgseattle@gmail.com](mailto:ssgseattle@gmail.com)